



Metro Vancouver: Governance & Growth

Greg Moore

CHAIR, METRO VANCOUVER BOARD

Lambda Alpha International – Land Economics Week

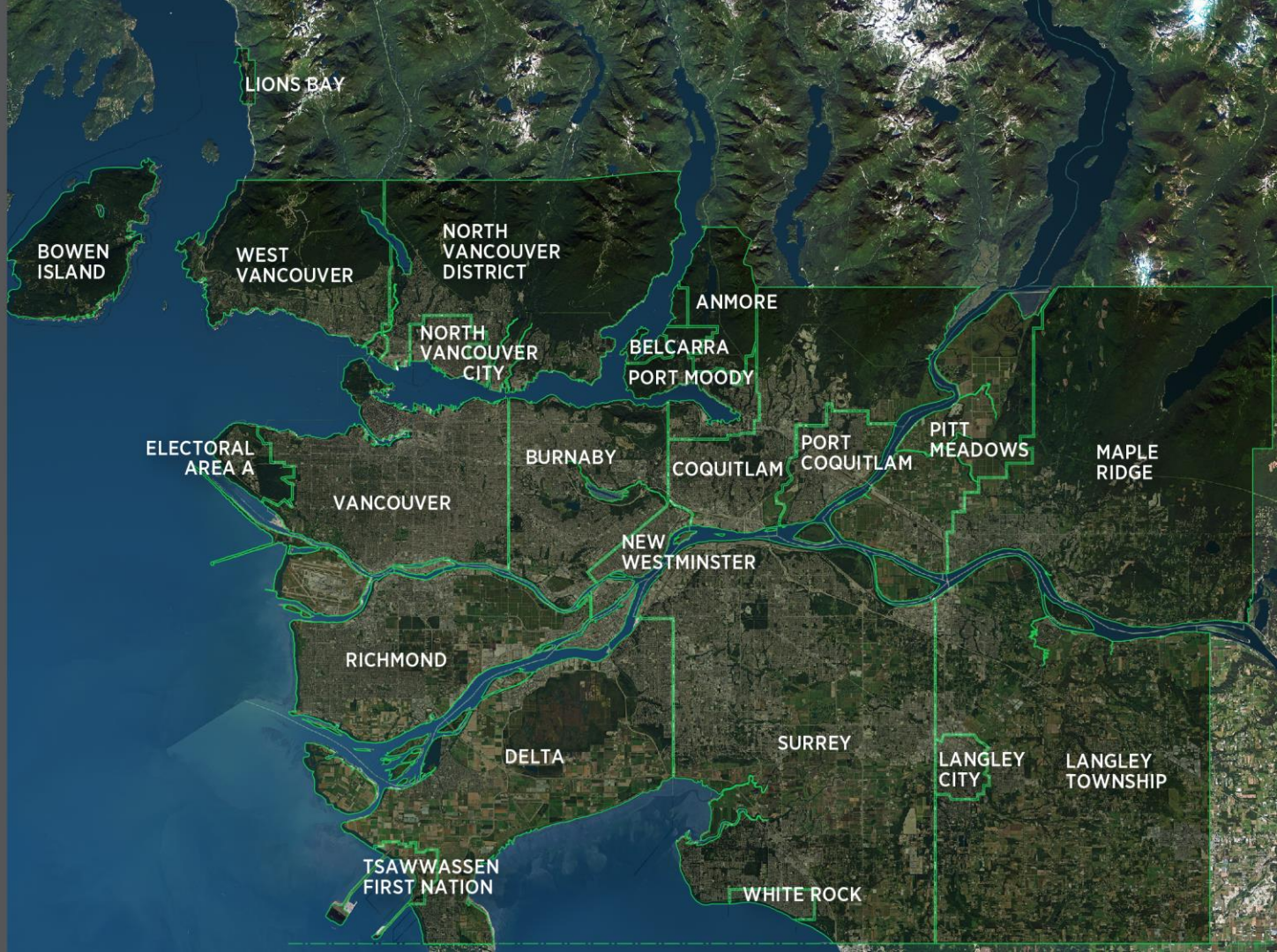


metrovancover
SERVICES AND SOLUTIONS FOR A LIVABLE REGION

Member Jurisdictions

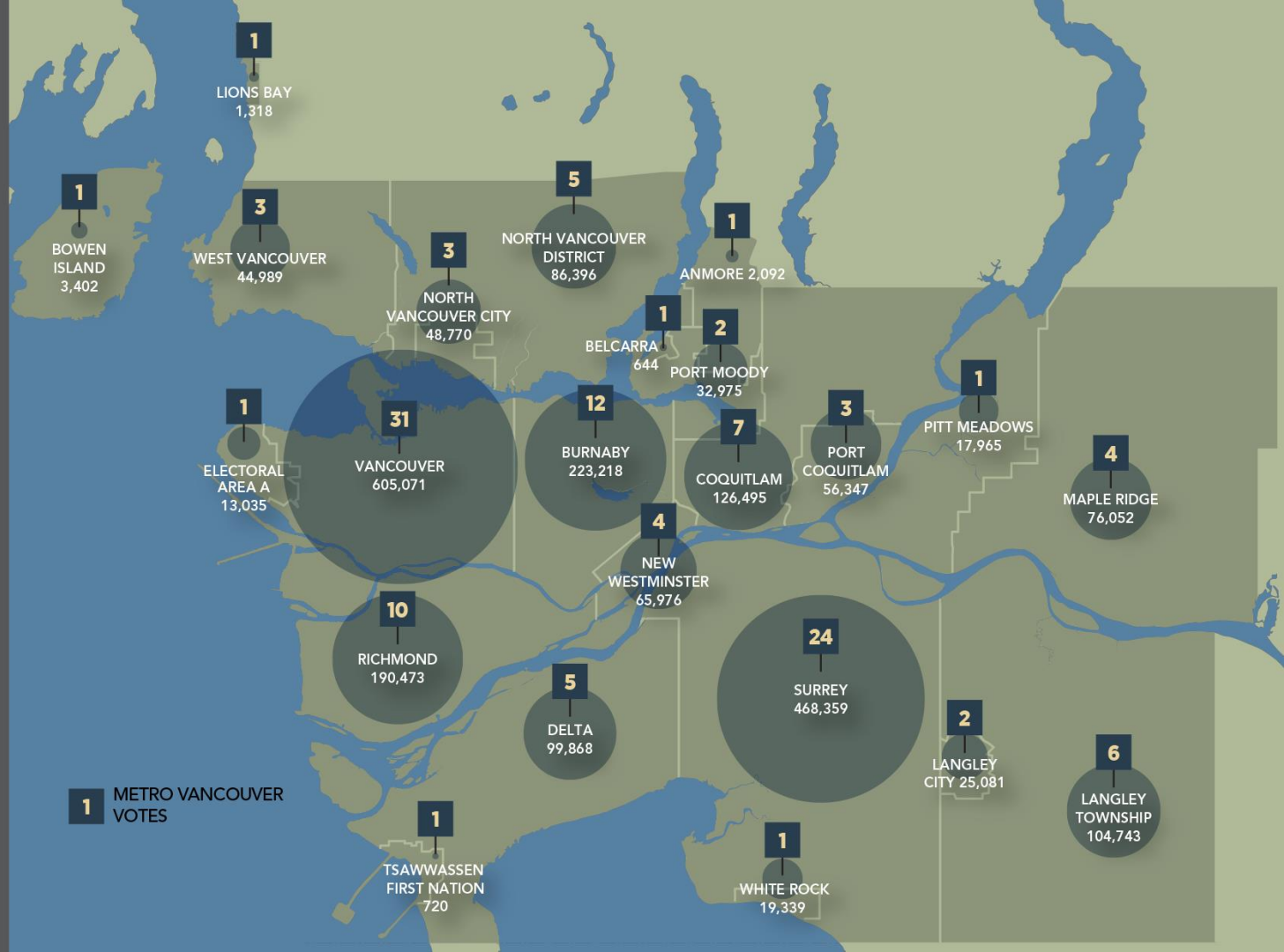
Population:
2.5 million

Land Area:
287,736 ha



Metro Vancouver

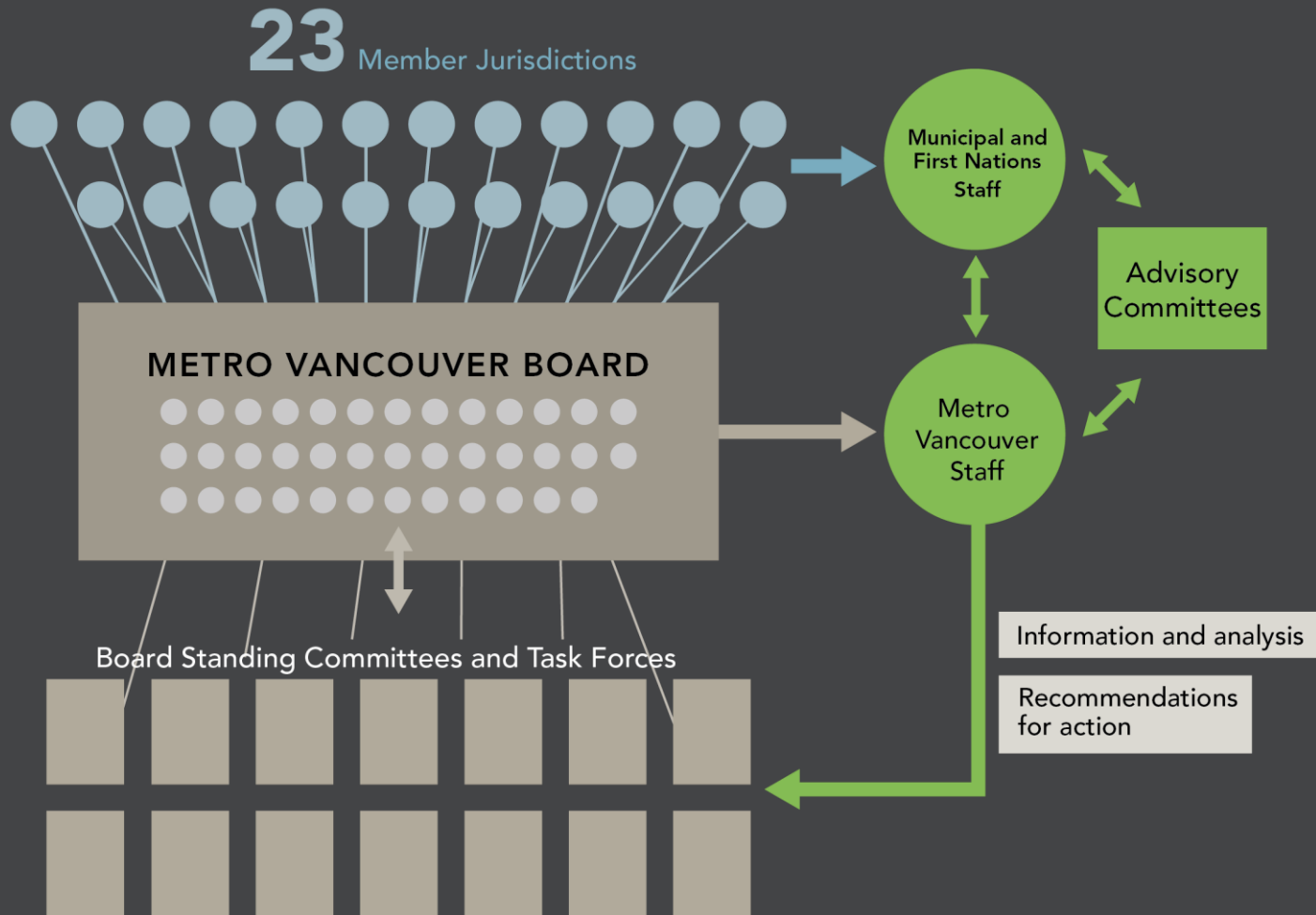
21 municipalities,
one Treaty First
Nation and one
electoral area
working together
for a livable
region



Metro Vancouver —Services



Metro Vancouver Governance




Regional Management Plans



An aerial photograph of a city, likely Vancouver, showing a dense urban landscape with numerous high-rise buildings and residential areas. The city is surrounded by greenery and mountains in the distance. A dark blue semi-transparent box is overlaid on the center of the image, containing the title text in white. The text is centered and reads "Metro 2040: Regional Growth Strategy".

Metro 2040: Regional Growth Strategy



“ . . .Promote human settlement that is socially, economically and environmentally healthy and that makes efficient use of public facilities and services, land and other resources.”

Local Government Act



Regional Planning Context

- Contain and structure ongoing growth
- Support a prosperous economy
- Protect important lands (industrial, agricultural, conservation/ recreation)
- Create complete and connected communities
- Support better mobility choices

Regional Growth Strategy
Bylaw No.1136, 2010

Metro Vancouver 2040

Shaping Our Future



Adopted by the
Greater Vancouver Regional District Board
on July 29, 2011
Updated to October 30, 2015

www.metrovancouver.org



Goal 1 Create a Compact Urban Area



Goal 2 Support a Sustainable Economy



Goal 3 Protect the Environment and Respond to Climate Change



Goal 4 Develop Complete Communities



Goal 5 Support Sustainable Transportation Choices

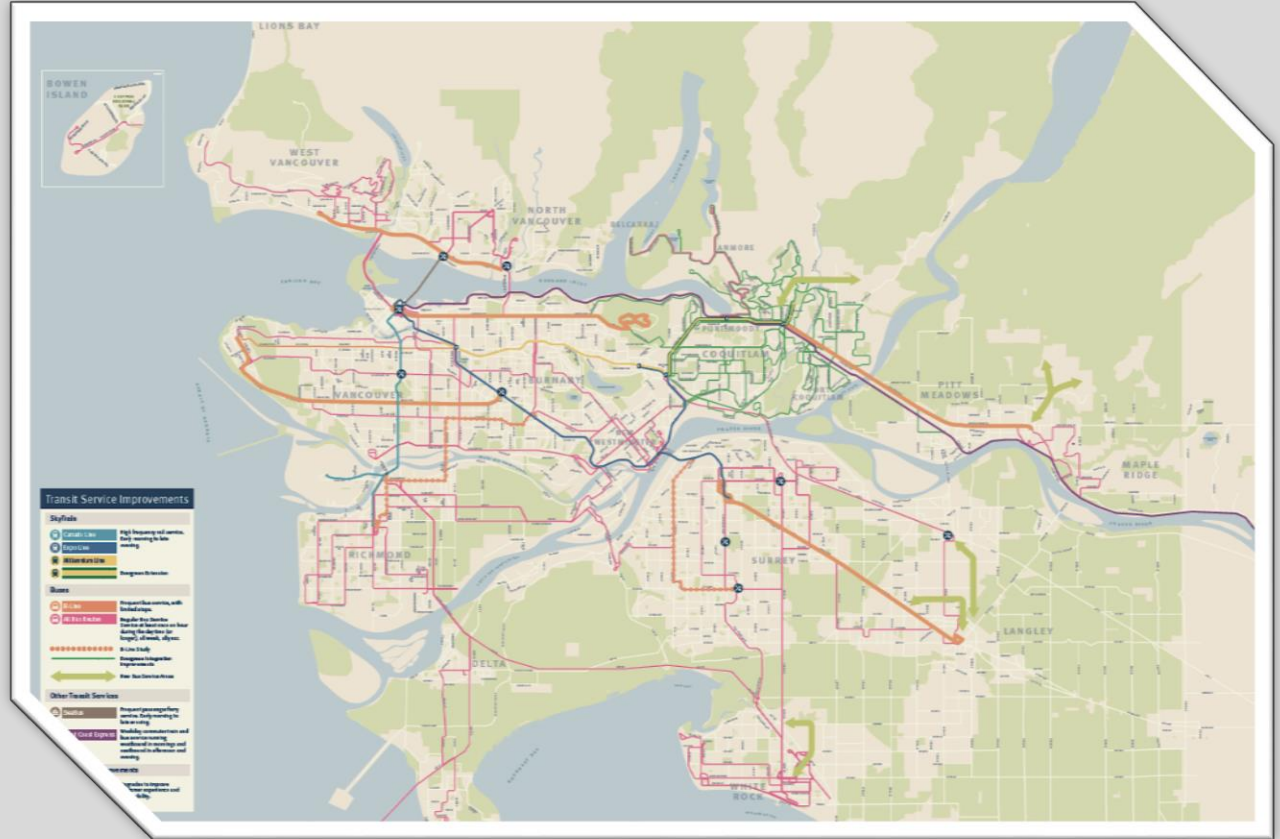
Collaboration is Key

- Partners in Planning
- Transportation: TransLink
- Housing: BC Housing/Provincial Government
- Many more partners



The Mayors' 10-Year Vision for Metro Vancouver

The
Phase One Plan
will improve
transportation
across
the region





Goal 1: Create A Compact Urban Area

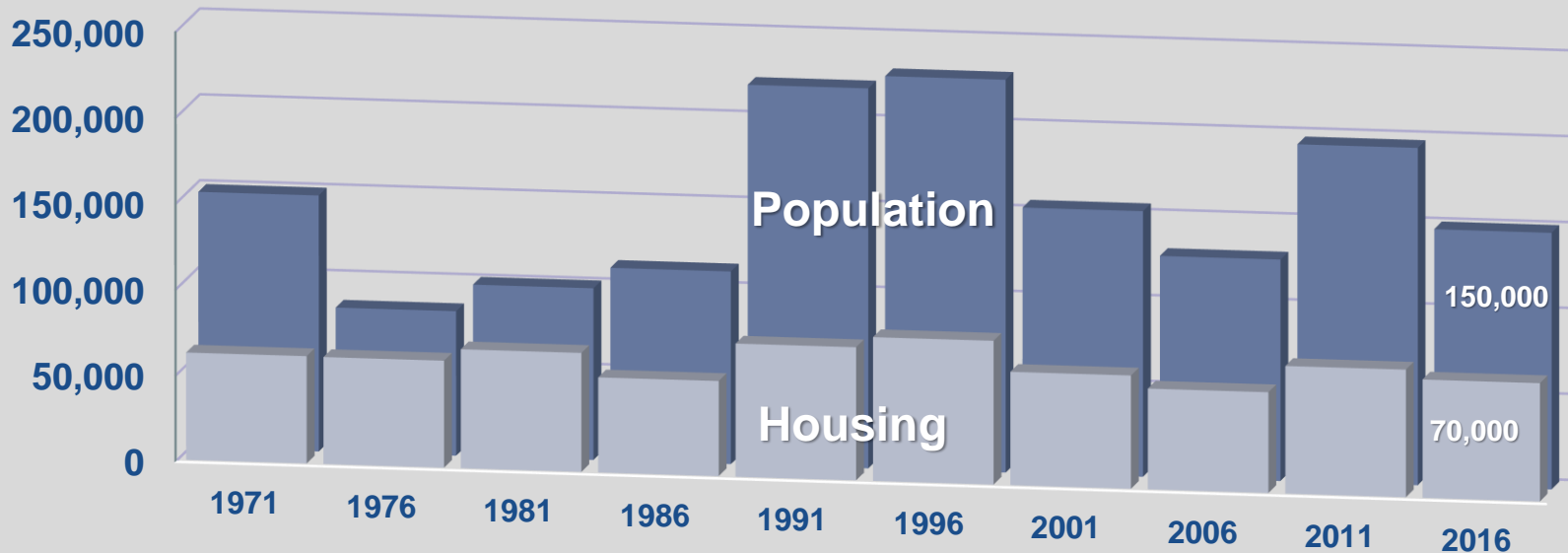
Metro Vancouver's Historic Growth Trends

Census 2011-2016

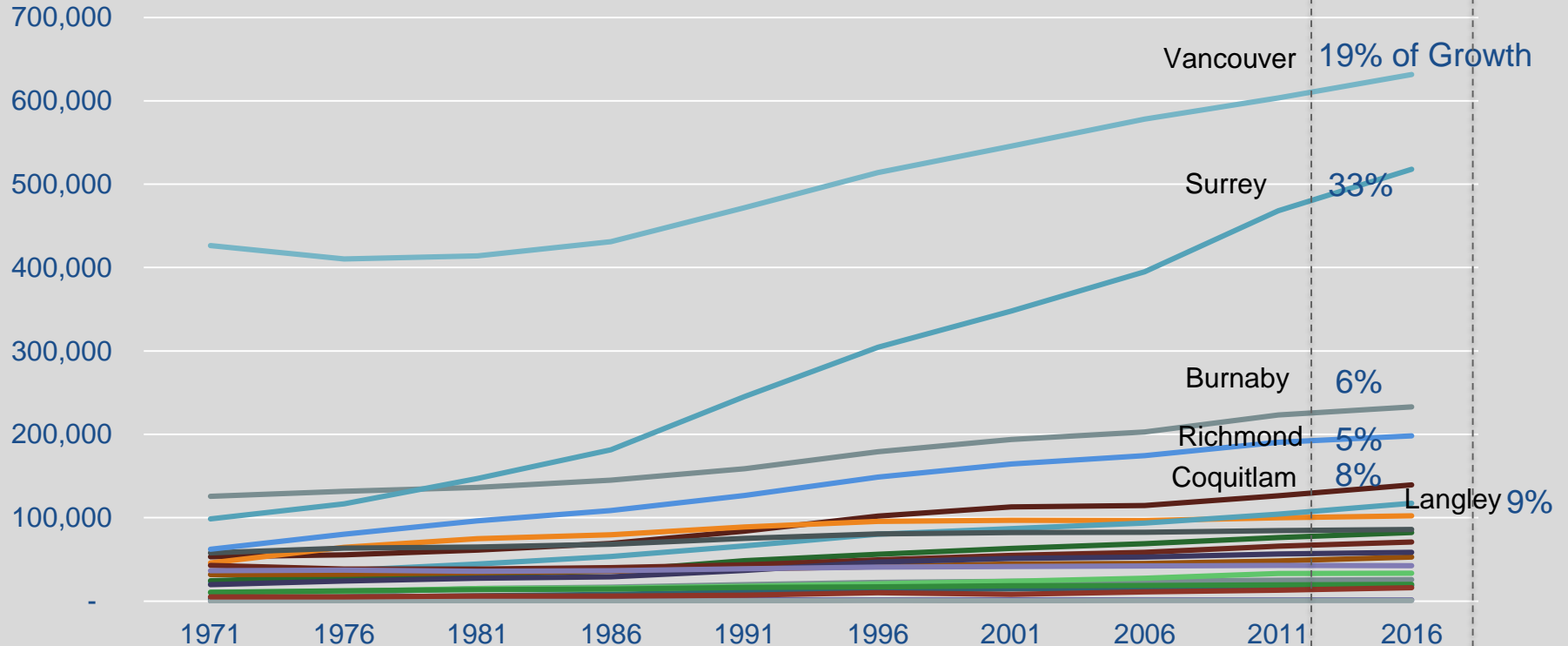
- Population +150,000 / 30,000/yr
- Dwellings +70,000 / 14,000 /yr

Average past 30 years

- Population 33,000 per year
- Dwellings 14,000 per year



Municipal Population Growth 1971-2016



Goal 1: Create a Compact Urban Area

Strategy 1.1:

Contain Urban Development within the
Urban Containment Boundary

Summary Measure – Urban Containment

- percent of regional dwelling unit growth located within the Urban Containment Boundary
- **Metro 2040 Target - 98%**

Goal 1: Create a Compact Urban Area

Strategy 1.2:

Focus Growth in Urban Centres and Frequent Transit Development Areas

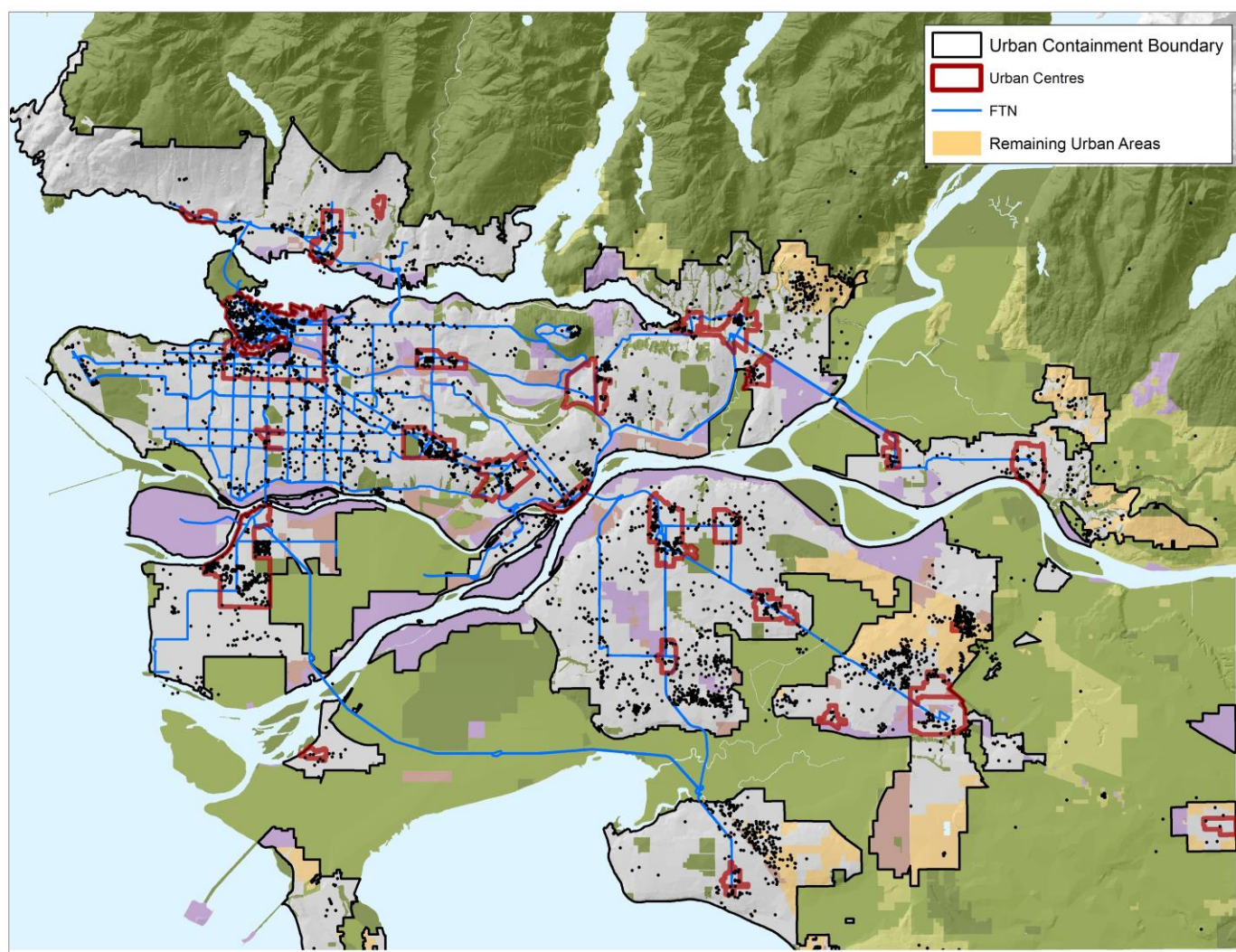
Summary Measures – Growth in Priority Areas

- percent of regional dwelling unit growth located in Urban Centres
Metro 2040 Target – 40%
- percent of regional dwelling unit growth located in Frequent Transit Development Areas
Metro 2040 Target – 28%

Net Dwelling Unit Growth

2011 - 2016

70,000 Units



Metro 2040 Growth Concept – On Track

Growth in...	2041 Target	2011-2016 Performance
Urban Containment Boundary	98%	98%
Urban Centres	40%	39%
Frequent Transit Development Areas	28%	25%
General Urban Areas	31%	34%
Remaining Urban Areas	20%	15-20%
Rural Areas	1%	1%

An aerial photograph of a city, likely Vancouver, showing a dense urban landscape with numerous high-rise buildings. A large body of water is visible on the left side, with a port area featuring several red cranes. A prominent white, oval-shaped stadium is situated in the middle-right portion of the city. The overall scene is a mix of modern architecture and established urban infrastructure.

Goal 2: Support a Sustainable Economy



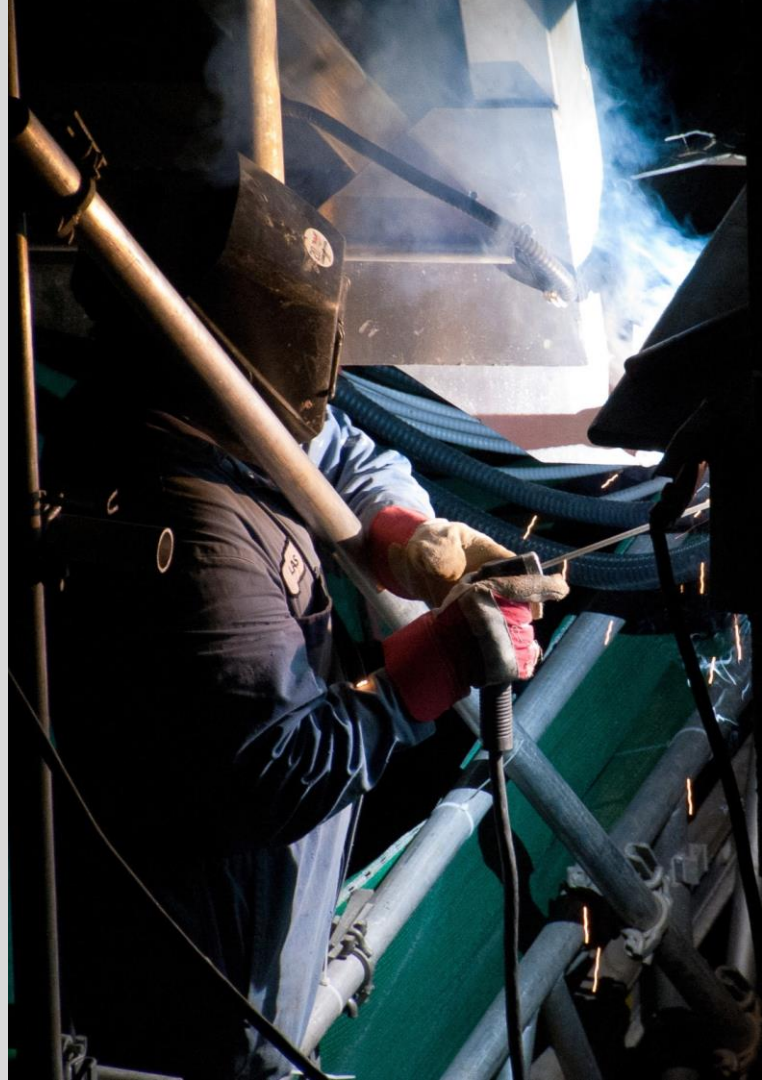
Goal 2: Support a Sustainable Economy

Strategy 2.1:

Promote land development patterns that support a diverse regional economy and employment close to where people live

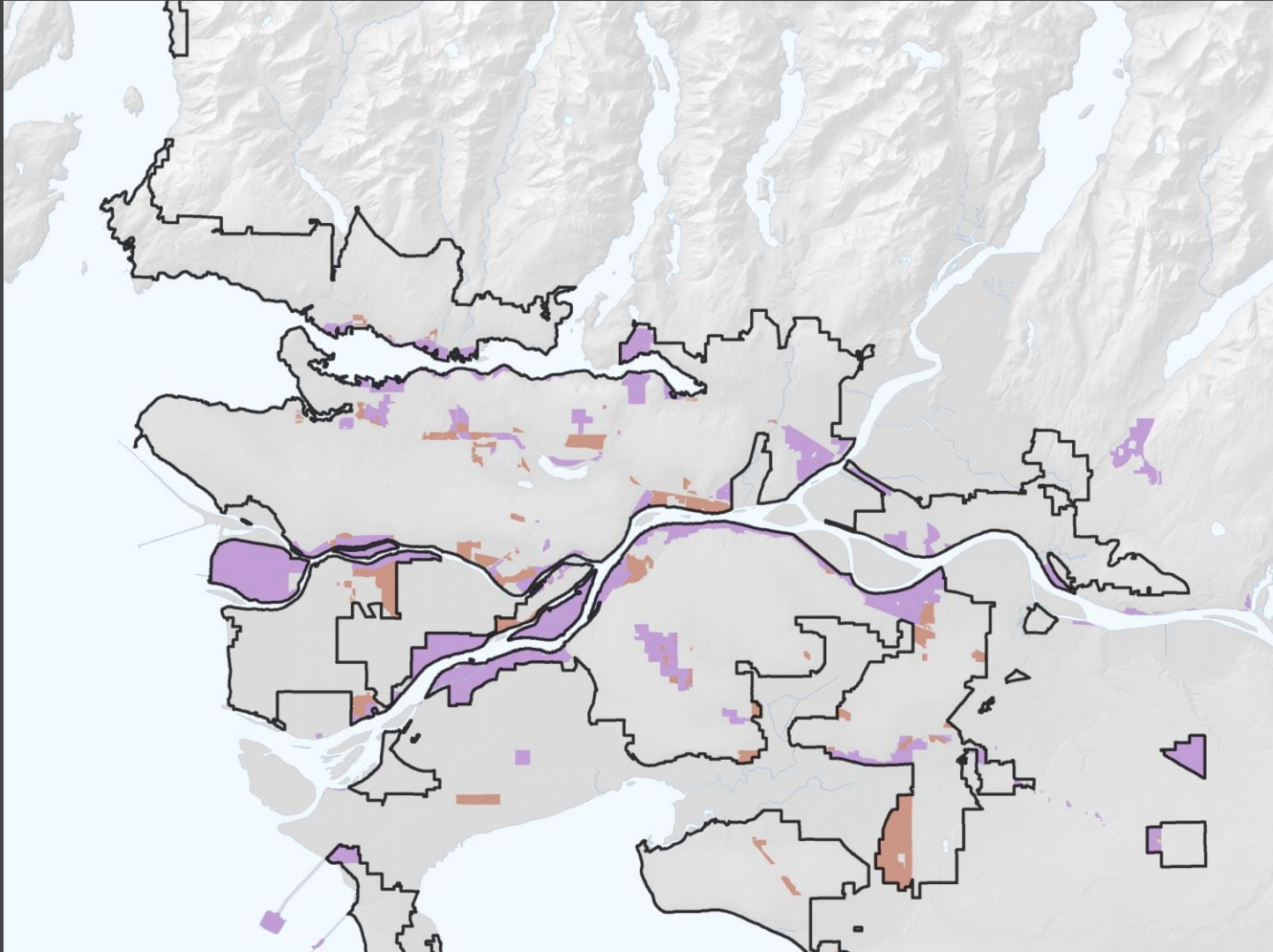
Goal 2: Support a Sustainable Economy

Strategy 2.2:
Protect the supply of industrial land



**Protect
Important
Lands:

Industrial
& Mixed
Employment**



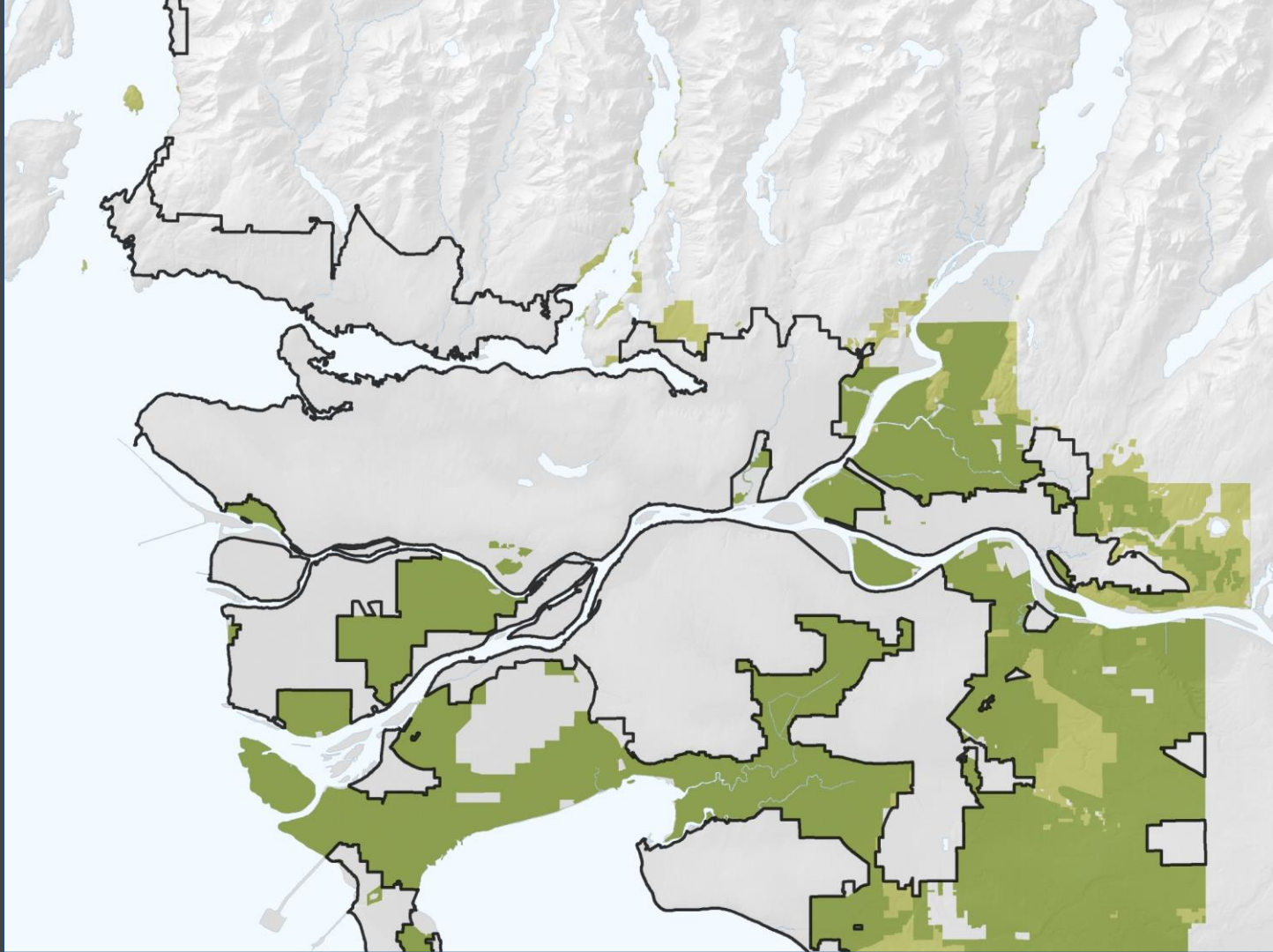


Goal 2: Support a Sustainable Economy

Strategy 2.3:

Protect the supply of agricultural land and promote agricultural viability with an emphasis on food production

**Protect
Important
Lands:
Agricultural**



Regional Prosperity



- Coordinated Economic Development at a Regional Level
- Direction through Board Strategic Plan
- External Pressure (Port, BoT)

The Regional Prosperity Initiative

- Absence of a collaborative, strategic approach to regional prosperity
- The Regional Prosperity Initiative will ***create a new regional organization bringing together business, academic and civic leaders***



Metro Vancouver Regional Economy Task Force

Greg Moore (Chair)

Metro Vancouver Board Chair and
Mayor, City of Port Coquitlam

Darrell Mussatto (Vice Chair)

Board Director and
Mayor, City of North Vancouver

Linda Hepner

Board Director and
Mayor, City of Surrey

Gregor Robertson

Board Director and
Mayor, City of Vancouver

Richard Stewart

Board Director and
Mayor, City of Coquitlam

Steering Committee

Greg Moore, Metro Vancouver (Chair)

Iqbal Ahmed,
Greater Vancouver Board of Trade

Robyn Crisanti,
Vancouver Fraser Port Authority

Joanne Curry, Simon Fraser University

Paul Faoro, CUPE BC

David Fung, ACDEG Group

Michael Goldberg, Professor Emeritus,
UBC's Sauder School of Business

Hussein Hallak, Launch Academy

Anita Huberman, Surrey Board of Trade

Peter Leitch, Motion Picture Production Industry
Association of BC

Val Litwin, BC Chamber of Commerce

Evi Mustel, Mustel Group

Ken Peacock, Business Council of BC

Gordon Price, SFU Centre for Dialogue

Andrew Ramlo, Rennie Group

Angela Robert, Conquer Mobile

Brad West, United Steelworkers District 3

Michael White,
University of British Columbia

Advisory Group

Iain Black

Greater Vancouver Board of Trade

Tony Geheran

TELUS

Kathy Kinloch

British Columbia Institute of Technology

Val Litwin

BC Chamber of Commerce

Santa Ono

University of British Columbia

Andrew Petter

Simon Fraser University

Robin Silvester

Port Metro Vancouver

John Wiebe

GLOBE Group

Jonathan Whitworth

Seaspan

Senator Yuen Pau Woo

Tamara Vrooman

Vancity

Vision

Collaborating to advance shared economic prosperity, livability & sustainability in Canada's Pacific gateway.

Mission

The Partnership will:

- Connect people, enterprises, academic institutions & governments to optimize economic development & quality of life.
- Research & promote the region's attributes, assets & opportunities.
- Lead & catalyze projects to strengthen a distinct, sustainable & high performing urban region.

Activities & strategic priorities

COLLABORATION

**RESEARCH
& ANALYSIS**

**MARKETING
& PROMOTION**

**HIGH IMPACT
PROJECTS**

Aligning people, enterprises, academic institutions & government around regional priorities for economic prosperity

Cooperation on actions to strengthen a distinct, sustainable & high performing urban region

An aerial photograph of a coastal city and river delta. The city is built on a peninsula and extends into the water. A large river flows through the city, forming a complex delta system. The surrounding landscape includes green fields, forests, and mountains in the background. A dark blue semi-transparent rectangle is overlaid on the center of the image, containing the text 'Metro 2040 Dashboard' in white, underlined font.

Metro 2040 Dashboard




Metro 2040

PERFORMANCE MONITORING DASHBOARD

This dashboard tracks progress toward the five goals set out in Metro Vancouver's regional growth strategy. Performance is evaluated on an ongoing basis as data becomes available, and is indicated by:

✔ on track ⚠ may not be on track ⌚ waiting for data 👁 observing



CREATE A COMPACT URBAN
AREA



SUPPORT A SUSTAINABLE
ECONOMY



PROTECT THE
ENVIRONMENT & RESPOND
TO CLIMATE CHANGE
IMPACTS



DEVELOP COMPLETE



SUPPORT SUSTAINABLE



GOAL 1: CREATE A COMPACT URBAN AREA

Metro 2040 / Goal 1 - Create a Compact Urban Area

THE GOAL

Make sure growth and development happens in the right places to use our limited land base efficiently while protecting important lands for future generations.

✓ on track ⚠ may not be on track ⌚ waiting for data 👁 observing

HOW ARE WE DOING

Contain Development



Since 2011, ninety-nine percent of the region's development occurred within the Urban Containment Boundary, helping to protect important lands and reduce utility costs.

Grow in the Right Places



Much of the region's growth has occurred in Urban Centres and areas with transit services, creating complete communities and reducing transit infrastructure costs.

Protect Rural Landscapes



Minimal growth has occurred in the region's rural areas, reducing utility expansion costs and reinforcing the Urban Containment Boundary.

PERFORMANCE DATA

Population

2,512,000

residents
in 2016



[LEARN MORE](#)

Employment

1,266,600

jobs
in 2015



[LEARN MORE](#)

Housing

970,000

dwelling units
in 2016



[LEARN MORE](#)

Contain Sprawl

99%

of growth
is within Urban Containment Boundary



[LEARN MORE](#)

Urban Centres

26

Urban Centres
in the region in 2015



[LEARN MORE](#)

Frequent Transit Development
Areas (FTDAs)

13

FTDAs
in the region 2015



[LEARN MORE](#)

Growth in Centres

39%

of growth
was in Urban Centres in 2016



[LEARN MORE](#)

Population in Centres & FTDAs

488,125

residents
in Urban Centres and FTDAs in 2011



[LEARN MORE](#)

GROWTH IN PRIORITY AREAS

KEY SUMMARY MEASURE

By focusing growth in Urban Centres and Frequent Transit Development Areas, rather than by spreading growth across lands with a General Urban designation within the Urban Containment Boundary, municipalities create the critical mass for jobs and services and the efficient delivery of transit, sewers, and other infrastructure.



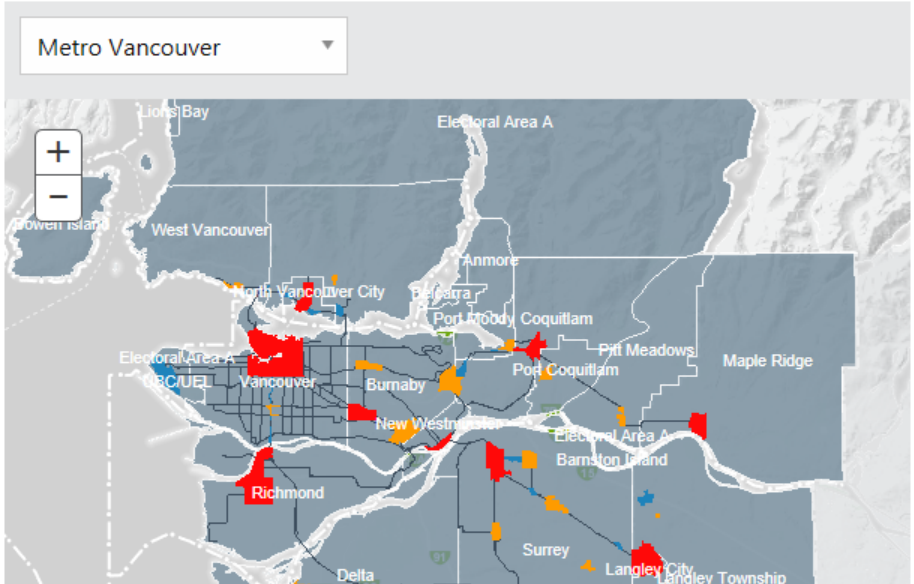
METRO 2040 VISION

40% of dwelling unit growth is targeted to Urban Centres, 28% is targeted to Frequent Transit Development Areas (FTDAs).



ON TRACK

39% of 2016 dwelling unit growth occurred in Urban Centres (data is not yet available for FTDAs).



Metro Vancouver 2011 Stats

